

- Session Objective(s)
1. Demonstrate Individual Offensive Tactics
  2. Demonstrate Puck Protection Tactics
  3. Demonstrate Team Offensive Tactics

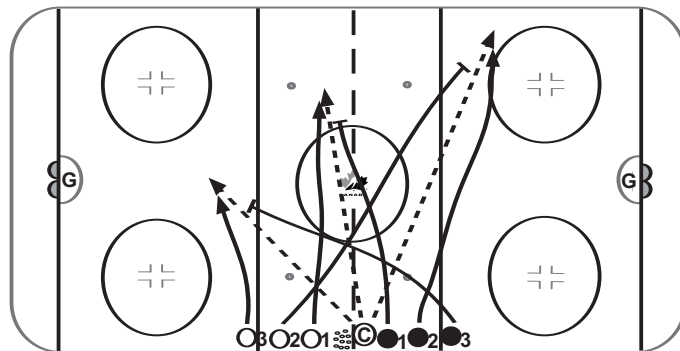
10 min

## MULTIPLE 1 ON 1 BATTLES

- © spots puck anywhere on ice.
- O1 & ●1 begin 1-on-1 play, then O2 & ●2, etc.
- Up to 5 pairs at a time.
- Play continues until goal is scored.

### KEY TEACHING POINTS

- Fun & Competition
- Goalie must maintain focus on all possibilities



### KEY EXECUTION POINTS

- Keep heads up, maintain overall awareness

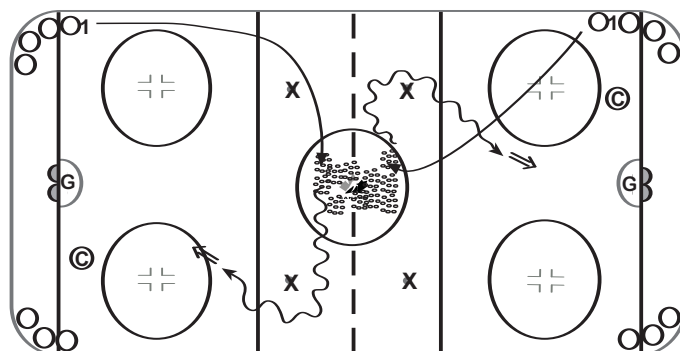
10 min

## INSIDE-OUT / OUTSIDE-OUTSIDE

- O1 accelerates through center circle, picks up puck and drives outside lane for shot on net.
- Inside-out: O1 picks up puck in NZ, turns toward near side, accelerating to outside drive for shot.

### KEY TEACHING POINTS

- Full speed puck carrying on cross-over strides
- Tight turn and acceleration on inside-out



### KEY EXECUTION POINTS

- As player takes puck in NZ, next player begins
- Exit tight turns with short, quick strides

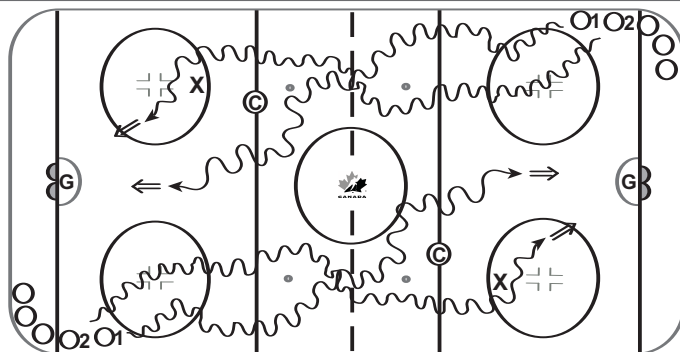
10 min

## OILER DRIVE DRILL 1-ON-0

- Pairs of O's control skate to center line and accelerate to offensive blue line.
- O1 fakes, then drive skates outside pylon for shot.
- O2 drives inside pylon, down mid land for shot.
- Next 2 begin as previous pair reaches the far blue line.

### KEY TEACHING POINTS

- Shoot in stride
- Keep the head up while protecting puck
- Stop in the slot for rebounds



### KEY EXECUTION POINTS

- No deking - shoot from drive skate
- After shot, O1 stops and faces O2
- O's should be finishing towards goal

- Session Objective(s)
1. Demonstrate Individual Offensive Tactics
  2. Demonstrate Puck Protection Tactics
  3. Demonstrate Team Offensive Tactics

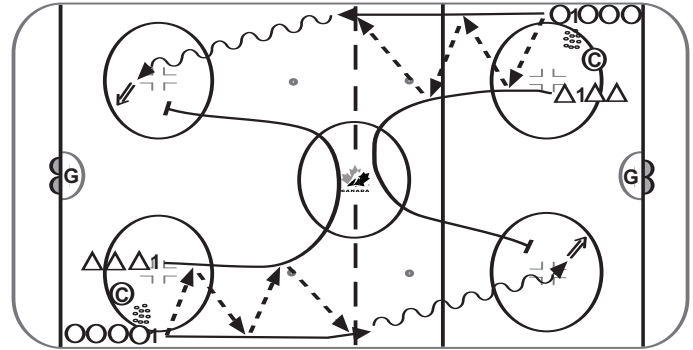
10 min

**OUTSIDE DRIVE DRILL 1-ON-1**

- O1 & D1 touch pass to center line.
- O1 drives on goal, D2 angles from inside.
- The next group begins on the whistle.
- Switch sides half way through drill.

**KEY TEACHING POINTS**

- O's to accelerate to maintain the advantage
- Puck protection while reading G's



**KEY EXECUTION POINTS**

- Begin on the whistle to ensure timing
- Progression: a) D's shadow only, no contact  
b) add limited contact

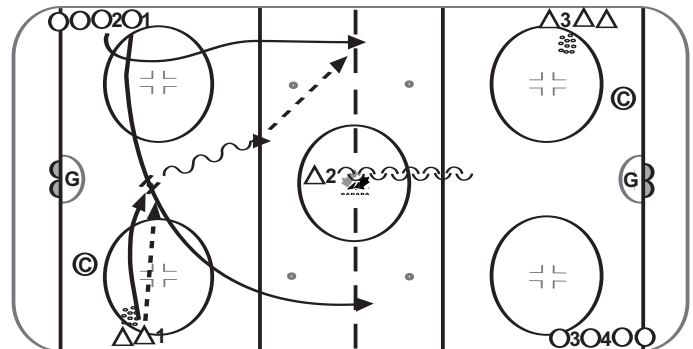
10 min

**SPEED 2-ON-1**

- O1 receives pass from D1.
- O1 touches puck back to D1 & control skates wide.
- D1 passes to O1 or O2 for 2-on-1 play.
- O2 wide attack, drive delay.
- O1 mid-lane drive support.
- Attack G2.

**KEY TEACHING POINTS**

- Drive puck to net until forced by D
- Accelerate into OZ



**KEY EXECUTION POINTS**

- Begin on the whistle
- Progression: add a regroup with D1 before the 2-on-1

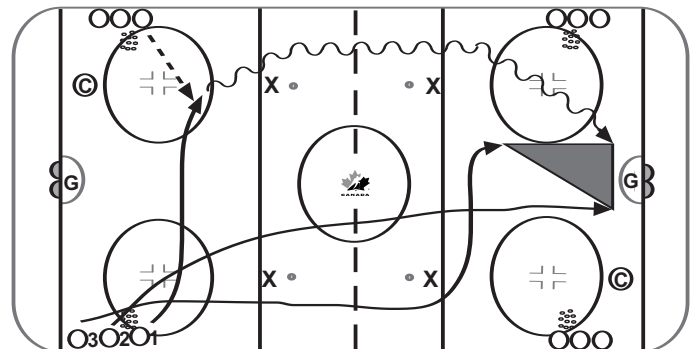
10 min

**1-2-3 OFFENSIVE ATTACK DRILL**

- Combine outside net drive, mid lane drive & I-up support to create offensive attack triangle.
- Progression:
  - a) O1 receives pass, drives net 1-on-0.
  - b) add O2 supporting with middle lane for 2-on-0.
  - c) add O3 on puck-side with I-up support, 3-on-0.

**KEY TEACHING POINTS**

- Maintain good net drive habits
- Timing - accelerate to net, stick on the ice
- Timing - support behind puck



**KEY EXECUTION POINTS**

- 1-on-0 & 2-on-0: opposite corners on the whistle
- © feedback to each group in line
- 3-on-0: alternate ends or both ends on whistle